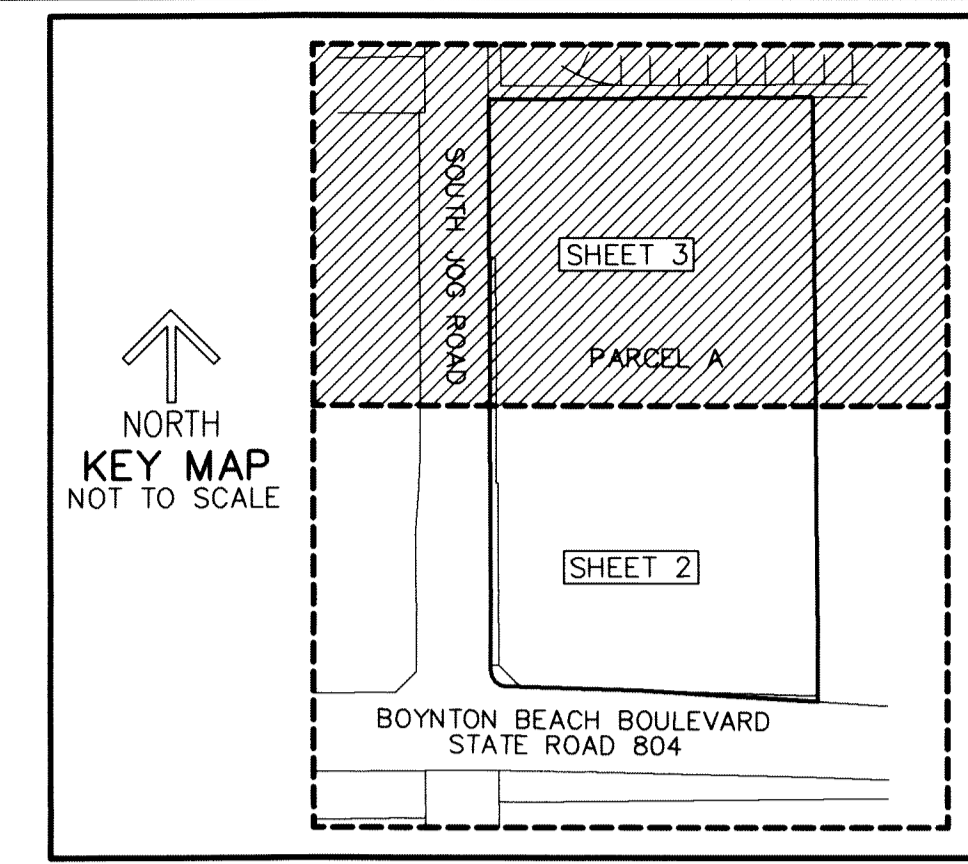


THIS INSTRUMENT PREPARED BY
DAVID P. LINDLEY
OF
CAULFIELD and WHEELER, INC.
SURVEYORS - ENGINEERS - PLANNERS
7900 GLADES ROAD, SUITE 100
BOCA RATON, FLORIDA 33434 - (561)392-1991

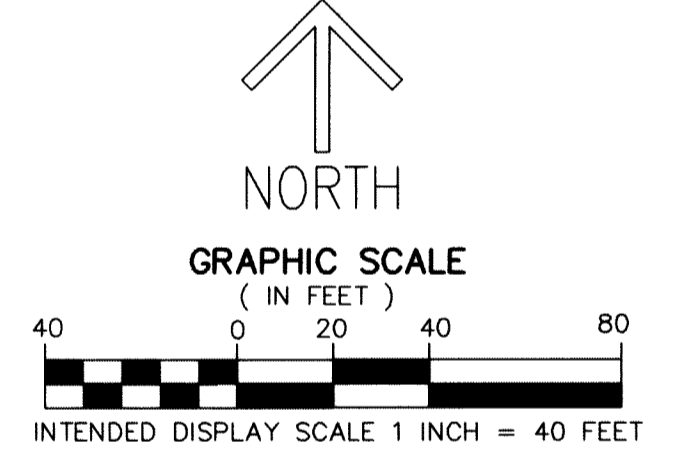
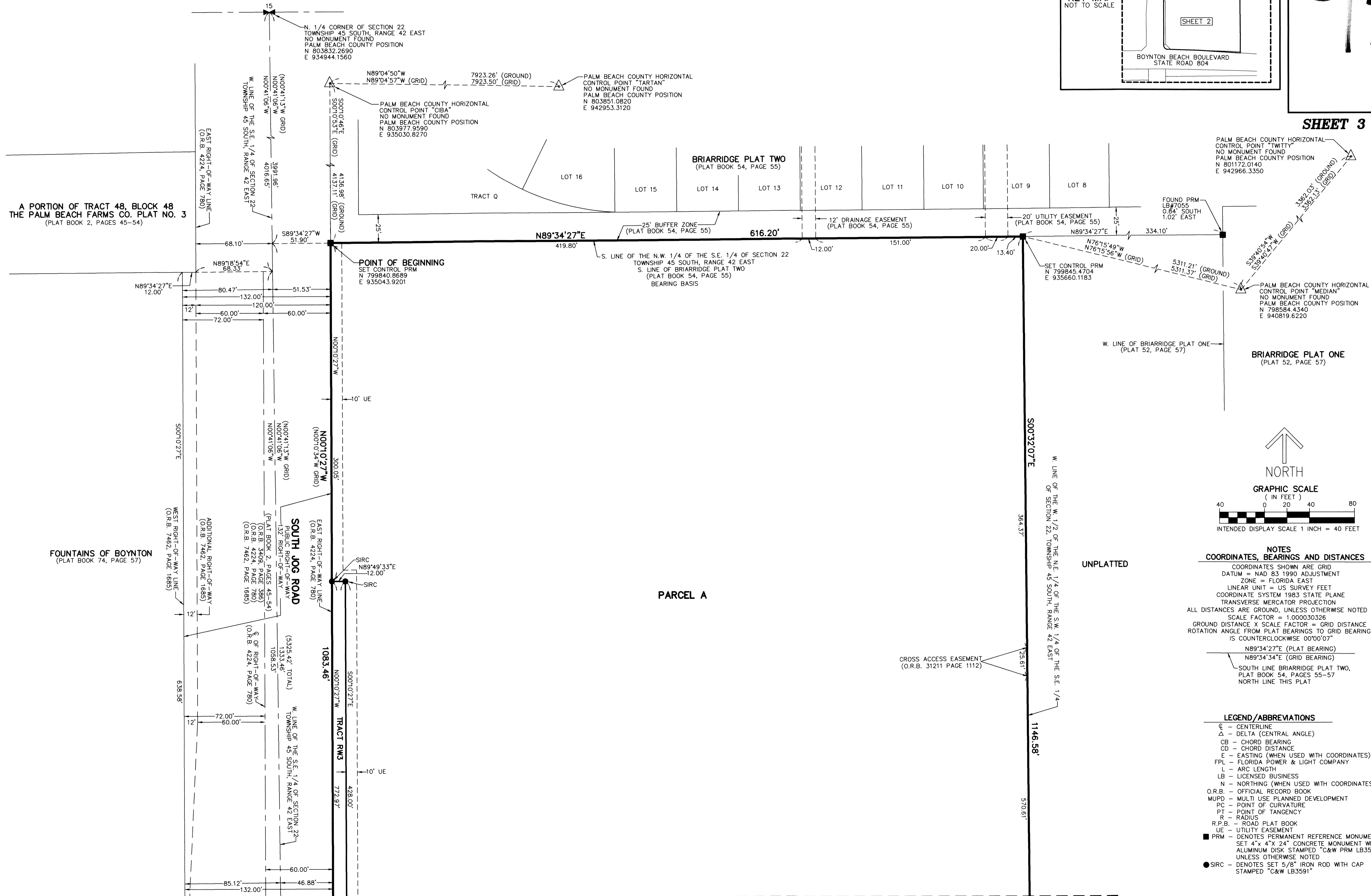
FOUNTAINS EAST MUPD

BEING A PORTION OF SECTION 22, TOWNSHIP 45 SOUTH, RANGE 42 EAST,
PALM BEACH COUNTY, FLORIDA.



05

SHEET 3 OF 3



NOTES
COORDINATES, BEARINGS AND DISTANCES
COORDINATES SHOWN ARE GRID
DATUM = NAD 83 1990 ADJUSTMENT
ZONE = FLORIDA EAST
LINEAR UNIT = US SURVEY FEET
COORDINATE SYSTEM 1983 STATE PLANE
TRANSVERSE MERCATOR PROJECTION
ALL DISTANCES ARE GROUND, UNLESS OTHERWISE NOTED
SCALE FACTOR = 1.000030326
GROUND DISTANCE X SCALE FACTOR = GRID DISTANCE
ROTATION ANGLE FROM PLAT BEARINGS TO GRID BEARINGS IS COUNTERCLOCKWISE 00°00'07"

N89°34'27"E (PLAT BEARING)
N89°34'34"E (GRID BEARING)
SOUTH LINE BRIARRIDGE PLAT TWO, PLAT BOOK 54, PAGES 55-57
NORTH LINE THIS PLAT

LEGEND/ABBREVIATIONS

- ⊕ - CENTERLINE
- Δ - DELTA (CENTRAL ANGLE)
- CB - CHORD BEARING
- CD - CHORD DISTANCE
- E - EASTING (WHEN USED WITH COORDINATES)
- FPL - FLORIDA POWER & LIGHT COMPANY
- L - ARC LENGTH
- LB - LICENSED BUSINESS
- N - NORTHING (WHEN USED WITH COORDINATES)
- O.R.B. - OFFICIAL RECORD BOOK
- MUPD - MULTI USE PLANNED DEVELOPMENT
- PC - POINT OF CURVATURE
- PT - POINT OF TANGENCY
- R - RADIUS
- R.P.B. - ROAD PLAT BOOK
- UE - UTILITY EASEMENT
- PRM - DENOTES PERMANENT REFERENCE MONUMENT SET 4" x 4" x 24" CONCRETE MONUMENT WITH ALUMINUM DISK STAMPED "C&W PRM LB3591" UNLESS OTHERWISE NOTED
- SIRC - DENOTES SET 5/8" IRON ROD WITH CAP STAMPED "C&W LB3591"

MATCH LINE SHEET 2